



MERITUS

A Program of
Santa Monica College



Schedule of Classes | Spring 2021 | Feb 16 - Jun 12

REGISTRATION

IMPORTANT SEMESTER DATES

The class schedule is available online at smc.edu/emeritus.

All classes and student support services for the spring semester are happening in distance education environments.

Thursday, December 3, 2020. . . . Schedule available online at smc.edu/emeritus

Monday, January 11, 2021 **First day of Registration/ Enrollment**

Tuesday, February 16, 2021 **SPRING SEMESTER BEGINS**

Friday, March 5, 2021 Department Flex Day (no classes/campus closed)

Thursday, March 18, 2021 Institutional Flex Day (no classes/campus closed)

Monday, April 12 – Saturday, April 17, 2021 Spring Break (no classes/campus closed)

Monday, May 31, 2021 Memorial Day (no classes/campus closed)

Saturday, June 12, 2021 **SPRING SEMESTER ENDS**

HOW TO REACH US



EMERITUS

A Program of Santa Monica College

1227 2nd Street, Santa Monica, CA 90401

Business Hours: Mon. – Fri., 8:30 a.m. – 4:30 p.m.

Telephone: 310-434-4306

Email: emeritus@smc.edu

Web: smc.edu/emeritus

ENROLLMENT SERVICES OPTIONS

Listed above are the important semester dates. Students must enroll every semester. **Students are initially allowed to enroll in a maximum of 4 classes for the spring 2021 semester. This cap will be lifted at the start of week 1 to allow you to enroll in additional classes, and enable us to fill more of the seats in available classes. Please note, the same enrollment rules apply; therefore, you will not be able to enroll in duplicate sections of the same course or enroll in a class that causes a time conflict, etc.**

NEW AND RETURNING STUDENTS

NEW STUDENTS are students without an SMC Student Identification Number. RETURNING STUDENTS are students absent from classes for three semesters or more. New and

returning students may register and enroll with the application form in the back of this schedule or the fillable PDF application form at smc.edu/emeritus. When using the fillable online application, a signature is required before sending the application as an email attachment to emeritus@smc.edu. Applications mailed or placed in the SMC Emeritus mail slot located near the front door of 1227 2nd Street must be received by the Friday before the 1st day of enrollment in order for you to be enrolled.

CONTINUING STUDENTS are students actively enrolled in the present or either of the previous 2 semesters. Continuing students may enroll online at smc.edu/cc or by using the fillable PDF application available at smc.edu/emeritus or by using a paper enrollment application. At least two weeks prior to the start of enrollment, Continuing Student Enrollment Cards are mailed to the address on record. Listed at the top of the form is a computer generated online enrollment appointment date/time that will rotate to a previous day each term. For immediate processing, enroll online using the SMC Corsair Connect Enrollment System on your appointment date/time or anytime thereafter. If you are **not** assigned an online enrollment appointment, you **cannot** enroll online. You may use the fillable PDF application at smc.edu/emeritus, your Continuing Student Enrollment Card, or the paper application form at the back of this printed schedule and send all registration materials as an email attachment to emeritus@smc.edu. Only continuing students who received an online enrollment appointment are eligible to use authorization codes given to them by faculty to self enroll online in closed classes after the start of the semester. If you receive an authorization code from an instructor for a closed class, enroll yourself in the class online at smc.edu/cc.

ONLINE ENROLLMENT SYSTEM FOR CONTINUING STUDENTS: CORSAIR CONNECT

The online enrollment process at Emeritus occurs through SMC's Corsair Connect system at smc.edu/cc. Online enrollment appointments are computer generated and rotate to a previous day each term. Online enrollment gives continuing students the best odds for successful enrollment. Enroll online on your appointment date/time or any time thereafter. Detailed online enrollment instructions are available online at smc.edu/emeritus or in the Emeritus Enrollment Services Office. Emeritus mini computer lab volunteers can assist students with online enrollment when the mini lab is open.

- Go to smc.edu/emeritus – click onto the links located at the left hand side. There you will find helpful links, such as: Instructions for Online Enrollment; Corsair Connect (Online Enrollment & SMC Email); Searchable Schedule (to search which classes are open); and other helpful links.
- Go to smc.edu/cc – use “Corsair Connect” to enroll online. Make sure you have your SMC/Emeritus Student ID number, password and class section numbers available. If this is the first time you are using Corsair Connect, then your initial

password will be your 6-digit date of birth (MMDDYY) and you will then be asked to convert your 6-digit date of birth password to a new alphanumeric password. You are responsible for retaining your new password and for printing your online enrollment transaction receipt. If you have forgotten your ID number or password, click on “I cannot access my account” on the Corsair Connect login screen and follow the next directions to retrieve your login information.

- The link to the searchable classes is located under the “In this section” or on the left-hand side of the smc.edu/emeritus webpage depending on if you are using a desktop computer or a mobile device/Chromebook. Once on the searchable classes page, select 1) the Semester (e.g. Winter 2021), 2) Class Type (Emeritus), and 3) Class Modality (All) 4) Class Status (Open & Closed). Scroll down and click the “Search” button. A listing of classes appears below the “Search” button. Click the right arrow at the bottom of the page to access the next rows and pages of classes.

APPLICATION FORM ENROLLMENT

The fillable PDF application form is available online at smc.edu/emeritus. A signature is required before sending the application as an email attachment to emeritus@smc.edu.

It is preferred that students using the paper application located in the back of this schedule scan/take a photo and email the completed form to emeritus@smc.edu.

- Fill out the form completely, sign, date and provide an emergency contact and number on the form.
- List courses in priority order; do not enroll in duplicate sections of the same course or classes that overlap in time.
- Write “Alt” to indicate your 2nd choice for a better chance of receiving a course of your choice.
- Write in a personal email address on your enrollment form.

If you cannot email the application form, you may mail or place forms into the SMC Emeritus mail slot located near the front door of 1227 2nd Street no later than the Friday before the 1st day of enrollment or your enrollment form will not be processed. All enrollments forms whether emailed, placed into the mail slot, or mailed are processed on a daily basis after all the online appointment have expired.

NOT ABLE TO ENROLL?

If you are unable to enroll because of missing application information, a required matriculation code change, unpaid credit course fees, a records hold, or disqualification status, call the Emeritus office for information. If you are unable to enroll due to a closed class, please see section below on closed classes. If you are having enrollment issues call the Emeritus office at 310-434-4306 for assistance.

TRANSACTION RECEIPT/CONFIRMATION OF ENROLLMENT

Students enrolling online will not receive a mailed transactions

receipt from Emeritus. You must print your transaction receipts from the SMC Corsair Connect online enrollment system. If you have submitted a paper application for enrollment, you will receive a transaction receipt via US mail. If a class you selected is not listed, then that indicates: the class was filled, there was a time conflict, or you tried to enroll in two sections of the same course. ID#s are listed on the upper left hand of the confirmation/receipt.

CLOSED CLASSES / WAIT LIST

For closed classes, students who enroll online can add themselves onto the wait list by clicking “Wait for a Class”, if wait list space is available. Students who submit a paper enrollment form will automatically be added to the wait list, if wait list space is available. The maximum capacity for a wait list is approximately 30% of the maximum seat capacity for the class. The wait list is ordered in chronological order: the name of the student joining the wait list the earliest will be included at the top (#1). Once the class starts, instructors will use this chronological wait list when considering granting authorization (add) codes or signing add cards / continuing student forms. The wait list will be updated as students enroll in the class or remove themselves from it. When a seat opens up in a class, all active students on the wait list will receive an Open Seat Notification email to their SMC email account. Whoever enrolls first gets the seat. Being on the wait list and receiving an Open Seat Notification email does not guarantee an actual seat to anyone. Enrollment for the open seat is on a “first come, first to enroll” basis. For higher chances of getting the open seat, check your SMC email regularly and register yourself online.

GENERAL INFORMATION AND ENROLLMENT TIPS:

- Courses are free but we gladly accept donations.
- Attend the first class or you may be dropped. Regular attendance throughout the semester is expected or you may be dropped from the class.
- Low enrollment and low attendance may cause class cancellations.
- Only enrolled students may attend and participate in class.

ADDRESS CHANGES

Use an address card for changes or make changes online at smc.edu/emeritus. Click on “Corsair Connect (Online Enrollment & SMC Email)” from the menu on the left side and login. Then, click the “Enrollment” blue tab/link in the middle of the page. From the left side menu, click “Profile / Preferences” and update your address, then press “Submit Changes” at the bottom of the page to save the new information.

EMERGENCY INFORMATION CARDS

Help us help you. Make sure your emergency information is current each term.

See page 4 for more distance education information.



DISTANCE EDUCATION INFORMATION

ACCESSING DISTANCE EDUCATION

In order for instructors to be able to provide students with distance education class information including Zoom “join a meeting” class links and passwords, all students must set up or activate their **Corsair Connect** account in order to receive emails from their instructors who will primarily communicate via students’ **SMC Gmail** email accounts.

Students need to familiarize themselves with signing into SMC’s Corsair Connect online enrollment and student services portal located at **smc.edu/cc**. First time signing in, students will use their **SMC ID Number** located on their enrollment confirmation and their temporary password which is their 6 digit date of birth (**MMDDYY**).

ONLINE RESOURCES

Informational links to help students navigate SMC Corsair Connect, SMC Gmail, and the “CC Guide” are conveniently located right above the Corsair Connect login screen in a blue and white banner located at **smc.edu/cc**. The SMC Corsair Connect Guide provides students with information to make their SMC Emeritus semesters successful by giving them step by step instructions ranging from online enrollment, accessing their SMC Gmail and retrieving lost passwords.

PERSONAL EMAIL ADDRESS

Students may also provide SMC Emeritus with their personal email address. Students can use the fillable SMC Emeritus application form (PDF) to provide us their personal email. Visit **smc.edu/emeritus** and click on the “**Application Form**”.

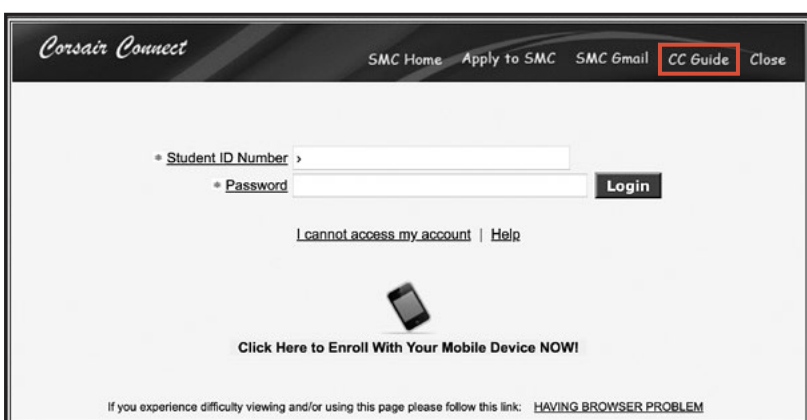
Student may also add their personal email to their active **Corsair Connect** account after login at **smc.edu/cc** :

1. Click the Enrollment tab
2. Click on Profile/Preferences
3. Add your personal email address

CORSAIR CONNECT GUIDE

Step by step instructions.

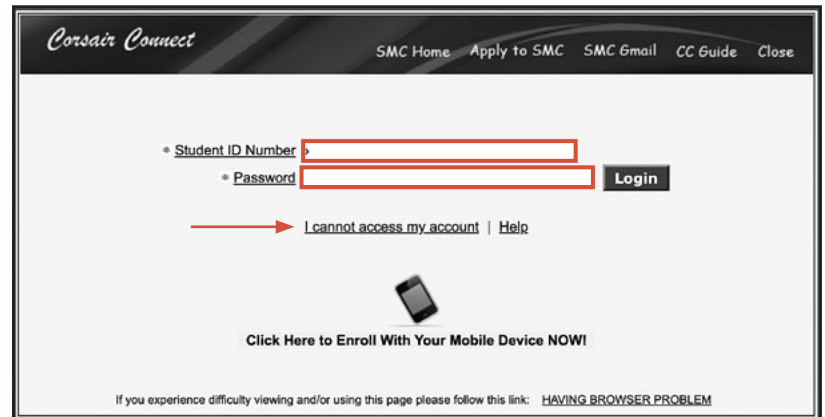
1. Go to Corsair Connect at **smc.edu/cc**
2. Click the “**CC Guide**” link



CORSAIR CONNECT

Log into your student account.

1. Go to Corsair Connect at **smc.edu/cc**
2. Enter your **SMC ID Number** and your **password** and click **Login**
3. Forgot password, select “**I cannot access my account**”
4. First time signing in, use your **SMC ID Number** and temporary password, your 6 digit date of birth (**MMDDYY**)



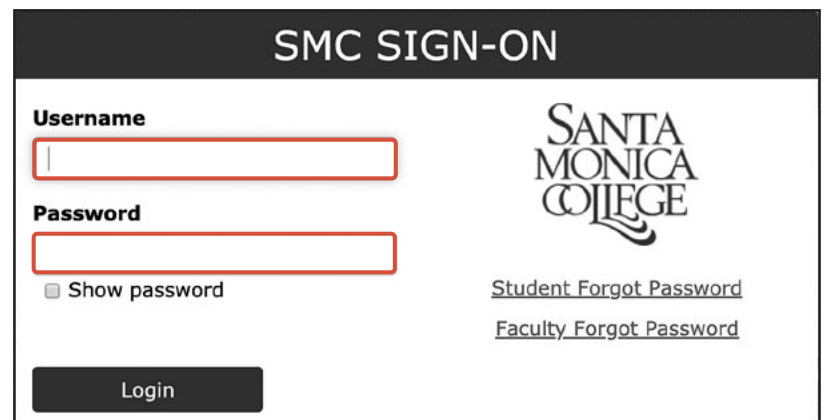
SMC STUDENT EMAIL

How to access your SMC student email account.

1. Go to Corsair Connect at **smc.edu/cc**
2. Click the “**SMC Gmail**” link



3. On the **SMC Sign-On** page, enter your network username (**Last Name_First Name_Middle**) and the password is the same one you use to sign into Corsair Connect and click **Login**.



Welcome to SMC Emeritus!

Dear Emeritus Community,

I hope everyone is staying safe. We will get through this time with patience.

Many of you are able to register online, which we appreciate. For those of you who still register using the PDF form or paper application, I implore you to please use **Corsair Connect** online instead. The Emeritus staff would be glad to help you learn to navigate that system. There are several important reasons why you should register on **Corsair Connect**:

- 1) Registering online is the only way to take advantage of your designated registration appointment. You can ask family or friends to help you navigate the online system.
- 2) Processing enrollment forms while working remotely is incredibly difficult for the staff. If you absolutely cannot figure out online enrollment, then please email your registration form to emeritus@smc.edu. Please do not mail forms unless absolutely necessary. We have staff in the office only for one week during the peak period of registration, and as we have seen and heard, there have been delays with mail delivery. If you mail a form in late, or certainly after the main registration period, it could be 1 week or more before the staff gets into the office to process those forms.
- 3) When you do contact the office, please leave succinct and detailed voicemails so we can address the question. 99% of the time, we have to return the call anyway. Emails are preferred, as we have found sometimes our return calls are not picked up.
- 4) Log in to **Corsair Connect** – you can activate your SMC email address, update your personal email address, and eventually even use **Corsair Connect** to register for classes.

If you need help, reach out to emeritus@smc.edu or for detailed technology help, email studentithelp@smc.edu

We appreciate your patience at this time, and again, strongly encourage you to register online on **Corsair Connect** for the reasons shared above. In January we will launch a new page on our website with faculty bios and contact information, so you can email your instructor directly with any questions. We will also add the staff with notes on what questions should go to which Emeritus employee email address, so we can be more efficient with meeting your needs.

I am pleased to announce our new Administrative Assistant, Ashley Price. She started in November and you will all find her to be a warm presence at Emeritus, and in our remote environment.

Please stay safe, and stay connected.

Sincerely,

Dr. Scott C. Silverman
Dean, Noncredit & External Programs (Interim)



IMPORTANT NOTES TO STUDENTS:

- All spring 2021 Emeritus classes will be conducted remotely via **Distance Education (ONLINE)**. Most will be synchronous and happen at the time scheduled, through Zoom or another platform. Some will be asynchronous, where you can complete the course on your own schedule. The instructor for each class will send the students on their rosters more information prior to the first class meeting. **Please activate your SMC Gmail account in order to receive your instructor's Distance Education online class access information.**
- See page 4 for accessing distance education information.
- If you have concerns or questions about privacy, contact the Program Coordinator at 310-434-3851.
- Schedule is subject to change.

A SAMPLE OF A COURSE FROM THE SCHEDULE:

Course #	Course Name		
9500	ART E00 Survey of the Arts		
10:00a.m.–11:50a.m. T	Survey the history of art by viewing selections from particular periods of time or development.		
ONLINE	Study art in the context of history. This semester covers Ancient Art.		
Smith J			
Section #	Time & Day	Distance Education	Instructor

The 9000 level section number of the course must be placed in the "section" field on the application form or add card for correct enrollment.

Abbreviation of Days

M = Monday

T = Tuesday

W = Wednesday

Th = Thursday

F = Friday

S = Saturday

MW = Monday & Wednesday

MF = Monday & Friday

TTh = Tuesday & Thursday

WF = Wednesday & Friday

Check Out the
EMERITUS WEBSITE
smc.edu/emeritus

YOU'LL FIND

- Enrollment information and instructions
- Schedules of classes
- How to support Emeritus
- Emeritus news and information
- The Emeritus Voice newsletter
- Contact information for Emeritus
- And more....



ARTS & CRAFTS

ART E00, Survey of Art

This course provides older adult students with in-depth knowledge about the chronological, social, and historical development of art and/or architecture. Older adults investigate the history of art and view selections from different time periods, regions, or developmental stages, and compare and contrast artwork from different periods with their peers.

9701	1:00p.m.-3:50p.m. T	ONLINE	Adams L K
9702	10:00a.m.-11:50a.m. T	ONLINE	Taylor V

Pre-Columbian Art: a visual trek through Mesoamerica focusing on sculpture, architecture, painting and material culture from ca. 2000 BCE until the Conquest.

9703	1:30p.m.-3:20p.m. W	ONLINE	Hero C J
9704	1:30p.m.-3:20p.m. Th	ONLINE	Hero C J
9705	1:30p.m.-3:20p.m. F	ONLINE	Hero C J

ART E15, Drawing

This course provides a supportive atmosphere for older adults—from beginners to more advanced students—to explore and experiment with self expression through drawing. Older adult students learn drawing skills, elements of design, composition, and creativity, as well as drawing techniques for representative or stylistic effect. As well, students learn to interpret the perceived “real world” in a two-dimensional field, and to improve their observation and hand-eye coordination. The course focuses on the processes by which one makes art, exposes students to different approaches, and challenges students to think about what they are doing or trying to do.

9708	9:30a.m.-11:45a.m. F	ONLINE	Hero C J
9709	12:30p.m.-2:45p.m. F	ONLINE	Tirr C A

ART E16, Life Drawing Studio

This course provides an opportunity for older adults to learn to see the human form and draw the anatomy of the human figure. This supportive class explores basic anatomy, movement, and skeletal structure of the figure using live models. Through demonstrations, class exercises, individual instruction, and guidance, beginning students learn basic life drawing skills, while more advanced students sharpen their skills in capturing the physical attributes of the model and expressiveness of the pose.

9710	9:00a.m.-11:50a.m. M	ONLINE	Adams L K
9711	9:00a.m.-11:50a.m. T	ONLINE	Harrison A B

ART E19, Painting

This course enhances older adults’ artistic creativity and painting skills through positive motivation and instruction in oils and acrylics techniques that may use the palette knife for effect. Older adults learn how to select supplies and equipment, and basic elements of composition. Painting projects, demonstrations, group critiques, and discussions are used to explore two-dimensional artwork.

9712	9:00a.m.-11:50a.m. W	ONLINE	Tirr C A
-------------	-----------------------------	---------------	-----------------

Painting in a variety of mediums and techniques: acrylics, oils, grounds, washes, layering, color mixing, and finishes.

9713	10:00a.m.-12:50p.m. F	ONLINE	Benson J K
9714	9:00a.m.-11:50a.m. Th	ONLINE	Harrison A B
9715	1:00p.m.-3:50p.m. T	ONLINE	Burchman J H

ART E20, Drawing and Painting

This course provides older adults with a supportive environment for instruction in drawing and painting. Older adults, from beginners to more advanced students, maintain or improve their drawing and/or painting skills in a constructive environment, and learn about space, line, value, and color in a workshop atmosphere.

9716	10:00a.m.-12:15p.m. M	ONLINE	Donon S G
9717	10:00a.m.-12:15p.m. W	ONLINE	Donon S G
9718	12:30p.m.-2:45p.m. W	ONLINE	Benson J K
9719	12:30p.m.-3:30p.m. M	ONLINE	Tirr C A

This section is open to all materials. It will be studies of natural forms, or plein air views of the landscape surrounding the classroom.

ART E21, Painting/Drawing, Oil and Acrylic

This course enhances older adults’ artistic creativity and painting skills through positive motivation and instruction in oils and acrylic techniques. Older adults learn basic painting techniques, the elements of composition, and how to select and use materials. Painting projects, demonstrations, and group critiques are used to explore two-dimensional artwork.

9720	9:00a.m.-11:15a.m. M	ONLINE	Harrison A B
9721	1:00p.m.-3:15p.m. M	ONLINE	Adams L K

ART E22, Watercolor

This course allows older adults who have never used watercolors to acquire a strong foundation in watercolor techniques, and provides those students with some watercolor experience with a strongly supportive peer group in which to paint. Older adult students learn watercolor techniques and methods, as well as washes, brush strokes, color, value, and composition.

9722	9:00a.m.-11:15a.m. T	ONLINE	Manseau F J
9723	11:30a.m.-1:45p.m. T	ONLINE	Manseau F J

ART E24, Calligraphy II

This course expands older adults’ knowledge of calligraphy and everyday calligraphic forms to use for personal growth, self expression, or for family and volunteer projects. Older adult students learn the tools and equipment needed to write the calligraphy alphabet, as well as fundamental calligraphy techniques, lettering styles, and display methods.

9724	9:30a.m.-12:20p.m. F	ONLINE	Martorello J M
-------------	-----------------------------	---------------	-----------------------

ART E30, Watercolor Studio

This course allows older adults who have never used watercolors to acquire a strong foundation in watercolor techniques, and provides those students with some watercolor experience with a strongly supportive peer group in which to paint. Older adult students learn watercolor techniques and methods, as well as washes, textures, color, value, and composition.

9725	9:00a.m.-11:50a.m. Th	ONLINE	Manseau F J
9726	9:00a.m.-11:50a.m. F	ONLINE	Tirr C A
9727	12:30p.m.-3:20p.m. W	ONLINE	Tirr C A
9728	1:00p.m.-3:50p.m. Th	ONLINE	Harrison A B

ART E55, Sculpture

This course introduces older adults to three-dimensional design principles and elements, and helps them create expressive works of sculpture. Older adults learn to appreciate sculpture as a medium of self expression, and use a combination of materials and techniques to create a sculptural form and develop an expressive idea using a variety of materials, including items from everyday life. Students are required to purchase or bring their own materials.

9729	12:00p.m.-2:15p.m. Th	ONLINE	Benson J K
-------------	------------------------------	---------------	-------------------



ART E80, Jewelry Making

This course provides older adults with an opportunity to create pieces of jewelry and learn an assortment of different techniques involved in creating jewelry. Students also learn about the wide range of materials available for making jewelry. Older adults make bracelets, earrings, and necklaces using techniques such as wire wrapping and bending, macrame, pearl knotting, crimping, and bead-weaving. Each week students learn a new technique and make a piece of jewelry using that technique.

9730 11:30a.m.-1:45p.m. Th ONLINE Ryza S V

Advanced Jewelry Making: New, more advanced projects weekly bead stringing, wirework, bead weaving, knotting, chain maille, and more. Students should master basic jewelry skills taught in the beginning class prior to enrolling.

9731 2:00p.m.-4:15p.m. Th ONLINE Ryza S V

Beginning/Intermediate Jewelry Making: New projects weekly. A wide range of jewelry-making techniques will be covered, including bead stringing, wirework, bead weaving, knotting, chain maille, and more. Bring any tools or materials you already have to the first class, but wait for teacher's purchasing guidelines before buying anything new.

HME EC E71, Needlecrafts II

This course provides a supportive, stimulating, and creative environment for older adults to create handmade needlework or other fiber arts projects using an assortment of techniques, including knitting, crochet, needlepoint, weaving and macrame. Beginning students will learn basic skills; students with some experience in needlework will learn more advanced techniques.

9791 1:30p.m.-4:20p.m. W ONLINE Ryza S V

Learn to knit, crochet, weave, do macrame, or any other fiber technique in this friendly, relaxed class. Teacher works individually with each student on student's chosen project(s), from complete beginner to advanced. Bring your own tools and materials and an idea of what you want to make.

EMPLOYMENT FOR SENIORS – COMPUTER TRAINING

REGISTER FOR ONE LEVEL ONLY WITHIN THE COMPUTER COURSES. The levels/content areas are:

- Basic Computer Training
- Word Processing – Beginning
- Word Processing – Intermediate
- Data Management
- Working with Photos
- Working with Videos
- Using the Internet and Internet Safety

Students will learn how to use computers confidently, and become familiar with basic concepts, terms and skills related to the Microsoft Windows Operating System and other software programs. Students will need a flash drive. Depending upon the instructor, a textbook may be used for this course. Your instructor will provide details.

OCC E00, Basic Computer Training (formerly Introduction to Computers)

This course is designed to assist students in accessing the world of computers and technology. Students acquire introductory computer skills, enabling them to interact with colleagues, family and friends and promote self-expression. Students learn about personal computers, improve technical vocabulary, review typing and mouse skills, conduct basic computer maintenance, and learn how to use computer special function keys.

YOU'VE GOT SMC EMAIL!

Every student at Emeritus has been assigned a Santa Monica College email address. Check it regularly to get information from college faculty and staff.

How do you get to your email?

- Go to the Santa Monica College website at **smc.edu**
- Click on the **Login** tab at the top of the screen and then click **Corsair Connect** below that
- Click onto the **SMC Gmail** link at the top of the **Corsair Connect** login screen
- A new window **SMC Sign-On** will appear
- Enter your **Username** and **Password** as directed on the SMC Sign-On page to gain access to your SMC Gmail account. If you have difficulty with the login, email us at **emeritus@smc.edu** or call us at **310-434-4306**.
- If this is the first time you are using **Corsair Connect**, then your initial password will be your 6-digit date of birth (MMDDYY) and you will then be asked to convert your 6-digit date of birth password to a new alphanumeric password. You are responsible for retaining your new password. If you have forgotten your ID number or password, click on **"I cannot access my account"** on the **Corsair Connect** login screen and follow the instructions to retrieve your login information.

ANDROID **9815 11:00a.m.-12:50p.m. Th ONLINE Simmonds A R**
The above section 9815 is a special iteration of the Basic Computer Skills course, applied specifically to phones and tablets using the Android operating system. This section will NOT address Apple devices.

APPLE'S iOS **9817 11:00a.m.-12:50p.m. F ONLINE Woolen D W**
The above section 9817 special iteration of the Basic Computer Skills course, applied specifically to Apple devices—specifically iPhones and iPads. Bring your Apple iPhone and/or iPad to class and be sure you know your Apple ID and password.

OCC E01, Word Processing

This course assists older adults in acquiring the skills necessary to use word processing software. Older adults learn to create, save, and retrieve documents and gain consumer and personal management skills. The pace of the course is designed to meet the needs of older adults who are at least somewhat familiar with computer technology.

9818 11:00a.m.-12:50p.m. M ONLINE Woolen D W

This class is for beginning MS Word Processing students.

OCC E10, Using Data Files

This course helps older adults understand how to use tables and data files to create mailing labels, financial records for taxes, or work in a volunteer or paid job requiring these and other consumer skills. The course is offered at a pace that helps older adults maximize their knowledge retention and continue learning.

9820 11:00a.m.-12:50p.m. W ONLINE Rodriguez J E
Above section 9820 be focused on Advanced Excel techniques.
9821 1:00p.m.-2:50p.m. T ONLINE Simmonds A R

OCC E20, Using the Internet Safely

This course focuses on ways students can better protect themselves in a new technological environment and use the Internet to find valid information. Best practices in virus protection and using e-mail are discussed. In addition, students examine and discuss their computer and internet needs for personal and professional use.

9822 9:00a.m.-10:50a.m. M ONLINE Woolen D W
9823 9:00a.m.-10:50a.m. W ONLINE Simmonds A R
9824 3:00p.m.-4:50p.m. M ONLINE Woolen D W
This class will focus on using the Internet safely with an emphasis on mobile applications.

PHOTO E00, Digital Photography I

This course assists older adults in selecting and using digital cameras. Older adults are encouraged to take photographs, keep photographic records, use photography as a means of self-expression, and share their vision and photographic experiences with others.

9825 9:00a.m.-10:50a.m. T ONLINE Schneir G

PHOTO E10, Digital Photography II

This course assists older adults in choosing and using modern technology for keeping photographic records of their family, friends, and travels, and helps them use photography as a means of self-expression. Older adults share their photographic visions with peers and other family members. Some emphasis is placed on documenting students' family histories.

9826 9:00a.m.-10:50a.m. T ONLINE Rodriguez J E
This will be an Advanced Section. Use Adobe Premiere to create simple videos. Knowledge of and experience in the use of Photoshop Elements is recommended.
9828 1:00p.m.-2:50p.m. M ONLINE Buckner K D
Basic photography, digital cameras and software.

HEALTH & CONDITIONING

HEALTH E21, Yoga Health & Safety, Principles & Practices for Older Adults

This course focuses on the history, principles and practices of yoga. Designed to promote health and safety among older adults, it focuses on yoga principles and practices to enhance the health of older adults through improved flexibility, balance, range of motion, strength, lung capacity and circulation. Some course sections may focus on specific yogic methods. Some sections may include therapeutic applications of yoga to address specific health challenges for older adults. Students will be encouraged to share their physical, mental and emotional challenges in a supportive environment specifically for older adults. These challenges will then be addressed within the coursework. Students will create a Daily Personal Yoga Health Plan integrating their own personal therapeutic yoga applications. Students will be encouraged to practice daily, creating opportunities to rehabilitate challenges. The course is designed to help students to use yoga methods such as postures, breathing techniques, meditation, and visualization to enhance their confidence, health, and overall feeling of well being.

9754 8:30a.m.-10:20a.m. WF ONLINE Dee D
9755 10:00a.m.-11:50a.m. TTh ONLINE Cooper M
9756 10:30a.m.-12:20p.m. TTh ONLINE Cass K
9757 11:00a.m.-12:50p.m. MW ONLINE Lieb J B
9758 2:00p.m.-3:50p.m. TTh ONLINE Dee D

HEALTH E22, Chi Gong Principles & Practices for Older Adults

This course is designed to enhance the health and safety of older adults through use of the principles and techniques of Chi Gong. Based on Chinese philosophy and healing concepts, the course will include the history, theory and practice of Chi Gong, including both the Wu School and Yang Style. Included are such Chinese philosophies as Yin and Yang, the Eight Directions, and Five Element theory and their applications to healthy living. Students work at their own level to improve tone, strength, flexibility and balance. Lectures, films, texts and discussions will explore the theory and practice of this traditional Chinese method for health and healing. Students will analyze which strategies best meet their needs, and create an individual health plan integrating Chi Gong techniques into their daily lives.

9759 8:30a.m.-9:45a.m. TTh ONLINE Holtzermann C

HEALTH E23, T'ai Chi Principles & Practices for Older Adults

This course offers an overview of the history, philosophy and techniques of the Chinese energy balancing health practice T'ai Chi Ch'uan. With a focus on enhancing healthy aging for older adults, the course offers strategies for improving balance and posture; increasing flexibility and endurance, reducing stress, and promoting relaxation and mindfulness. The course shows older adults how to avoid injury, conserve energy and use the body in an ergonomic manner. Students will create a personal health plan integrating T'ai Chi principles and techniques into their daily lives.

9760 9:00a.m.-10:15a.m. MF ONLINE Akers P A
Beginner and intermediate levels.

LOS ANGELES
 COUNTY

HELP LINE

Find housing, transportation, meals, medical care,
 senior centers, legal and elder abuse help.

Visit 211la.org for free information



9761 12:00p.m.-1:15p.m. WF ONLINE Nardini A S
This class is for Intermediate students only. Students must already know the Yang Style Slow Form, 108 moves. This class is not appropriate for Beginners.

9762 12:30p.m.-1:45p.m. TTh ONLINE Terry Jr P W
9763 1:00p.m.-2:15p.m. MW ONLINE Terry Jr P W
9764 2:00p.m.-3:15p.m. MF ONLINE Akers P A

HEALTH E24, Physical Fitness Principles & Practices for Older Adults

This course focuses on physical fitness and conditioning principles to help older adults maintain or improve their health, safety and independence. It covers basic principles of anatomy and fitness, showing older adults how to improve their cardiovascular health, muscle strength, endurance, flexibility, posture and balance. Principles of good nutrition also will be covered. Students explore movement strategies that are particularly helpful for older adults. Included are proper concepts and methods for warm-ups, stretching, low-impact aerobic activity, cool-downs, strength training and balance work. Students learn how to avoid falls and safely accommodate physical conditions and challenges. Students create a customized personal fitness and conditioning plan to suit their individual needs and physical challenges.

9765 8:30a.m.-9:45a.m. TTh ONLINE Moy D N
9766 9:00a.m.-10:15a.m. MW ONLINE Wapner-Baart L J
9767 9:00a.m.-10:15a.m. TTh ONLINE Wapner-Baart L J
9768 9:30a.m.-10:45a.m. TTh ONLINE Terry Jr P W
9769 11:00a.m.-12:15p.m. TTh ONLINE Terry Jr P W
9770 2:00p.m.-3:50p.m. W ONLINE Cass K

HEALTH E25, Strength & Stamina Training Principles & Practices for Older Adults

This course focuses on how strength training and stamina building strategies help to promote health, safety and vitality in older adults. Principles of basic anatomy and physiology are covered. The course explores how older adults can maintain or improve their health and stamina through strength training using free weights, resistance devices and fitness techniques. The course emphasizes safe ways to start and maintain a program to increase strength, improve stamina and sustain bone density. Principles of good nutrition and stress management are included. Students create a personal fitness and strength training plan based on their individual needs and physical challenges.

9771 8:30a.m.-9:45a.m. TTh ONLINE Regalado O
9772 10:00a.m.-11:15a.m. TTh ONLINE Regalado O
9773 10:30a.m.-11:45a.m. MW ONLINE Wapner-Baart L J
9774 10:30a.m.-11:45a.m. MW ONLINE Huner K A
9775 12:00p.m.-1:15p.m. TTh ONLINE Wapner-Baart L J

HEALTH E30, Personal Safety – Fall Prevention

This course is designed to help students avoid falls, which are the most frequent cause of serious injury in older adults. The course focuses on how, when and where falls frequently occur; how to maintain mobility, and how to improve and recover one's balance. Students will create an individualized activity program to improve balance, endurance, strength and flexibility.

9776 12:00p.m.-1:50p.m. W ONLINE Evans Jami R

HEALTH E34, Stress Reduction through Yoga

This course offers older adults a range of strategies and techniques to reduce and manage stress in their lives. It includes stress reduction methods such as positive thinking, breathing exercises, meditation, humor, diet and exercise. The course also helps students establish peer support groups to help maintain their stress reduction skills.

9777 8:00a.m.-9:50a.m. S ONLINE Holtzermann C
9778 9:00a.m.-10:50a.m. M ONLINE Cooper M
9779 11:00a.m.-12:50p.m. F ONLINE Lieb J B

HEALTH E38, Joint Health & Mobility for Older Adults

This course helps older adults with chronic joint pain or mobility problems to attain and maintain physical strength, mobility and flexibility. Older adults with arthritis and/or other minor physical limitations will learn about the function of joints in the human body and techniques to move effectively without joint stress. Students create an individual plan for mobility and physical fitness.

9780 11:00a.m.-12:15p.m. MW ONLINE Albert G S
9781 10:30a.m.-11:45a.m. TTh ONLINE Wapner-Baart L J
9782 10:30a.m.-11:45a.m. TTh ONLINE Moy D N
9783 12:30p.m.-1:45p.m. TTh ONLINE Regalado O
9784 2:30p.m.-3:45p.m. MW ONLINE Albert G S

HOME ECONOMICS

CT E00, The Fix-It Class – Repair Almost Anything

This course teaches older adults about household tools, how to make minor or more complex home repairs or maintenance, and how to evaluate proposed repair processes when hiring and paying a repair person. Older adults learn to repair leaky faucets, fix minor electrical problems, hang almost everything, caulk a bathtub, and so forth. The course is intended to help older adults be knowledgeable, confident, and prudent about home repairs and maintenance.

9736 1:00p.m.-3:15p.m. Th ONLINE Ross M A

HME EC E01, Sewing Lab

This course helps older adults learn sewing-based skills, including how to construct clothing, engage in creative sewing projects, use patterns, engage in patchwork or machine quilting, and/or other specialized sewing techniques. Older adults learn economical sewing techniques and socialize with their peers in a supportive and creative environment.

9789 12:00p.m.-2:50p.m. M ONLINE Lewis K

HME EC E52, Restaurant Critic – Dining Wisely: Healthy Eating Choices for Older Adults

This course helps older adults learn how to prepare healthy foods for a small household and how to make cost-effective choices in planning a menu. Older adults work together to create a cookbook or recipe book, share food and recipes with their peers, learn restaurant terms, learn to write a standard recipe, and discuss and write about memories involving food. The course also engages older adults in discussions about food fads and provides factual information on food additives, vitamins, safe food storage, health precautions, and basic nutritional information.

9790 11:30a.m.-1:50p.m. M ONLINE Salgado G



HUMAN DEVELOPMENT

HUMDEV E06, Enjoy Life – Understanding Our Mind, Body & Brain for Senior Adults

This course familiarizes older adults with the aging process, including physiological, psychological, and sociological aspects. Older adults become more comfortable with changes in themselves and others over time, and learn to celebrate the benefits of a longer life. Older adults also learn new coping strategies and explore issues facing adults of all ages, including conflicts, stereotypes, age, bias, loss, and change.

9792 1:30p.m.-2:45p.m. TTh ONLINE Albert G S

HUMDEV E17, Senior Seminar – Luisa R.G. Kot Concert Series

This seminar provides a supportive atmosphere for discussions about a variety of topics of interest to older adults. Topics may include philosophy, music, laughter as good medicine, legislation that affects older adults, and others. For example, in a seminar focused on philosophy, older adults might explore philosophical sources and connections between ideas, values, and concepts that are relevant to older adults' life experiences. In a seminar focused on musical performance, older adults might be exposed to different performers, composers, and musicians and engage in stimulating discussions about music, performers' lives, the ways in which music and art can enrich one's life, and so forth. Regardless of the specific topic, this seminar provides a space for older adults to socialize with their peers and validate their life experiences while gaining exposure to mentally stimulating content.

9794 3:00p.m.-4:50p.m. Th ONLINE Peterson J D

HUMDEV E22, Senior Seminar: Through a Jewish Lens – Art, Culture & Entertainment

This course is designed to help older adult students learn about Jewish culture, from the historical backdrop of the 19th Century's worldwide advances, pogroms, and immigrations, to the flowering of Jewish art, culture and entertainment in 20th Century United States and beyond. The course aims to improve older adults outlook on life, stimulate their minds and imaginations, improve peer group interaction and communication, and increase their sense of positive aging and cultural identity with particular attention to Jewish humor and tenacity as survival mechanisms in the face of adversity. Older adults will engage with their peers in a positive and up-lifting manner while learning about the use of art and humor through the last century. They will learn about Jewish theater, literature, film, art and music, and how American culture has flourished as a result of the Jews' contributions. We will discuss: changes in stereotypes such as comedic images of older adults and other subgroups of the community; different types of art, self-expression and humor; and/or popular trends in all aspects of culture and entertainment.

9795 11:30a.m.-1:20p.m. W ONLINE Abatemarco A M

HUMDEV E24, Bereavement Support

This course helps older adults in the resolution of grief and toward a more positive view or reaction to the death of a loved one. The course provides older adults with a variety of alternative methods of dealing with loss in a small group setting. Older adults share their grief with others, receive encouragement and moral support, and learn about the natural grieving process, as well as how to heal and rebuild their lives.

9796 1:30p.m.-3:20p.m. M ONLINE Press P L

HUMDEV E25, Dealing with Hearing Impairment

This course helps older adults with hearing impairments improve their communication skills and adaptive techniques and increase their levels of sociability and self-confidence. Older adults learn the study of speech, lip reading, body language, and auditory clues.

9797 12:30p.m.-2:20p.m. T ONLINE Frand L

HUMDEV E27, Exercising the Brain

This course assists older adults in minimizing anxiety when memory behavior patterns change. The ultimate goal of the class is to stimulate thinking and to exercise the brain. Older adults learn the latest information on the causes, symptoms, and treatments of memory loss in older adults, as well as practice skills to enhance memory retention and retrieval.

9798 10:00a.m.-11:50a.m. T ONLINE Frand L

9800 12:30p.m.-2:20p.m. W ONLINE Frand L

PSYCH E33, Living as a Single Person

This course assists older adults who are facing a change in their lifestyle because they are now single. Older adults explore topics such as dealing with isolation ageism, depression, eating patterns, and social interactions. The course assists older adults in making the necessary transitions and adjustments to live a happy and successful life as an older single person.

9832 11:00a.m.-12:50p.m. M ONLINE Press P L

LITERATURE

BILING E01, Literature in Spanish

This course helps older adults explore a variety of Spanish literature in the language in which it was written and stimulates their appreciation of the vast literary output of Spain, Latin America, and other Spanish speaking countries. Students may also explore the history and culture of the country in which a literary work was produced, and participate in class discussions in Spanish.

IN SPANISH

9732 9:00a.m.-10:50a.m. F ONLINE Kim Yunsook

BILING E02, French Literature

This course helps older adults understand and appreciate the vast literary output of France and other French speaking countries, and introduces them to French culture and people. Older adults explore a variety of French literature in the language in which it was written and engage in stimulating discussions with their peers.

IN FRENCH

9733 2:00p.m.-3:50p.m. T ONLINE Isner-Ball D R

BILING E03, Literature from Around the World

This course helps older adults experience and appreciate the vast literary output from non-English speaking countries and discuss that literature with peers in the language in which it was written. Course sections may focus on literature from any non-English speaking country, as long as there are sufficient numbers of interested students and faculty who can teach in that language are available.

9735 1:30p.m.-3:20p.m. W ONLINE Reich S L



ENGL E20, Literature: The Novel

This course, which examines the world's greatest literary works (such as James Joyce's *Ulysses*) is designed to help older adults learn about trends in writing in different societies. Older adults learn about the uniqueness of each age of literature and each author under scrutiny. Various literary themes and the concerns of authors in different historical periods serve as a basis for discussion so that older adults may compare and contrast these topics with current events, modern cultures and sub-cultures, and societal structures and mores. Older adults will also discuss with their peers how these works relate to their own life experiences and accumulated knowledge.

9737 2:00p.m.-3:50p.m. M ONLINE Dwyer F

*We will continue our close reading and discussion of *Wives and Daughters* by Elizabeth Gaskell. The text we are using is the Wordsworth Classics paperback edition. ISBN-13: 978-1840224160.*

ENGL E22, Short Story

This course is designed for older adults who want to explore literature, such as the works of Milton, Austen, Hawthorne, and T.S. Eliot, as well as short stories from Latin America, America, Europe, and Africa, and discuss it with their peers. This course allows older adults to experience a wide range of classic and contemporary literature in a social setting and relate that content and emotion to their own personal life experiences.

9738 10:00a.m.-11:50a.m. T ONLINE Wali M

9739 11:00a.m.-12:50p.m. W ONLINE Ghabaei B

ENGL E23, Shakespeare

This course allows older adults to study and discuss selected plays by William Shakespeare and his contemporaries with their peers. Older adults will experience or re-experience the emotional and dramatic content in Shakespeare's classic works in light of their current life situations, and discuss the concerns of the human heart from the height of passion to the depths of despair.

9740 9:00a.m.-10:50a.m. M ONLINE Achorn J C

9741 11:00a.m.-12:50p.m. M ONLINE Achorn J C

ENGL E24, Bible as Literature

This course introduces older adults to a wide variety of interpretations of biblical literature, encouraging students to offer interpretations based on their own knowledge and life experiences.

9742 2:00p.m.-3:50p.m. Th ONLINE Marx J A

ENGL E25, Literature: The American Novel

This course assists older adults in analyzing American novels, discussing them with their peers, and renewing their appreciation for this unique form of literature. Older adults learn background and trends in writing in different time periods and regions of America, and discuss how these works relate to their own life experiences and accumulated knowledge.

9743 9:00a.m.-10:50a.m. T ONLINE Achorn J C

ENGL E27, Poetry and Fiction

This course helps older adults explore a wide variety of poetry; in particular, poetry as adventure, confirmation, and renewal. Older adults also employ selected poems as a means to examine their life experiences and discuss these experiences with their peers. This course is designed to refresh older adults' enjoyment and increase their appreciation of poetry as a means of expression, and helps older adults explore poetry in relation to other types of literature, in particular in its use of language and imagery.

9744 10:00a.m.-11:50a.m. W ONLINE Davis C V

ENGL E29, Greek Literature

This course introduces older adults to the world of ancient Greek drama and fosters discussion among peers. Older adults will study Greek theater from a literary viewpoint and learn about plots, characters, and different interpretations through comparative analysis. Older adults will learn how ancient Greek drama is interpreted in modern media and will relate it to their own lives and experiences.

9745 11:30a.m.-1:20p.m. M ONLINE Dwyer F

*We are currently working our way through Homer's *Iliad*, in the first English translation by a woman, Caroline Alexander. ISBN-13: 978-0062046284.*

ENGL E30, Creative Writing

This course nurtures, revitalizes, and stimulates older adult writers who may already be producing or thinking about producing written material. The course is intended to discover, encourage, and develop untapped writing talent in older adults. It also allows older adults to develop and refine their writing and self expression skills, discuss their writing with peers, and comment on their peers' writing in a respectful and constructive manner. The course is also a forum for older adults to share their creative voices with peers.

9746 9:00a.m.-11:15a.m. M ONLINE Kronsberg G J

9747 9:30a.m.-11:45a.m. T ONLINE Reyes A C

ENGL E33, Autobiography

This course helps older adults review and integrate the experiences that have shaped their lives, share memories with peers, and create a record of events for themselves and their families. Through this class older adults achieve a sense of pride in their accomplishments, improve their writing abilities, and express themselves in writing that can be shared with family, friends, and the public if desired.

9748 9:00a.m.-11:15a.m. Th ONLINE Wali M

9749 9:30a.m.-11:45a.m. S ONLINE Fox Jr R W

9750 12:00p.m.-2:15p.m. S ONLINE Reyes A C

9751 12:30p.m.-2:45p.m. F ONLINE Reyes A C

ENGL E34, Writing for Publication

This course will be split into three units of focus. The first unit will be spent writing and sharing new pieces of memoir, fiction or poetry. During the second unit, students will prepare their selected piece (or several short ones) for publication in the Emeritus Chronicles journal. Each student will give and receive several rounds of editorial feedback. During the third and last unit of this course, enrolled students will give editorial feedback to writers not enrolled in this class who also submitted pieces to the Emeritus Chronicles. This course will culminate in the assembly of the Emeritus Chronicles which will be published in the spring.

9752 1:00p.m.-3:50p.m. M ONLINE Wali M

This is a hands-on course focusing on the production of the SMC Emeritus Newsletter and literary journals as well as being an active writer's workshop with an emphasis on polishing and revising work in preparation for submission and publication. The class will produce the SMC Emeritus Newsletter in the first 4 weeks of the class, and then turn its focus to producing either the Chronicles or the Ongoing Moment, the two literary journals of Emeritus.



ENGL E37, Writing Seminar

This course develops and refines older adults' writing skills in an informal round-table atmosphere through classroom readings and critiques of their own and classmates' writing. The course is intended to discover, encourage, and develop untapped writing talent in older adults and nurture, revitalize, and stimulate older adult writers who may already be expressing themselves through the written word. The course is also a forum for older adults to share their creative voices with peers.

9753 11:30a.m.-1:20p.m. M ONLINE Kronsberg G J

MUSIC – PERFORMING ARTS

MUSIC E00, Concert Band

This course reinforces older adults' love of performing music in public and provides a structure for them to express themselves and participate in a performance group during their later years. Older adults also experience the physical benefits of deep breathing and head, eye, and ear coordination that result from playing a musical instrument. The course mentally stimulates older adults to concentrate on a wide variety of musical score, memorize parts, and problem solve in front of an audience.

9803 6:30p.m.-9:20p.m. T ONLINE Miyoshi Y

MUSIC E02, Guitar for Older Adults

This course re-stimulates older adults' interest in and knowledge of music played on the guitar and enhances their self-expression through music. Older adults learn basic and some advanced guitar chords, strumming patterns, and finger picks while playing songs from the 1920s, 1930s, 1940s, and 1950s, as well as traditional folk songs.

9804 9:30a.m.-11:00a.m. MW ONLINE Terry Jr P W

MUSIC E03, "The Merits" – Vocal Ensemble

This course provides older adults with an opportunity to express themselves musically, perform in community events, gain a sense of belonging to a creative peer group, and continue their life experiences in music. The course also helps older adults improve their vocal performance skills, rehearsal techniques, and general knowledge of music.

9805 10:00a.m.-12:50p.m. T ONLINE Bryant W

MUSIC E04, Voice Training

This course provides a venue for older adults to discover or strengthen their musical creativity, personal vocal skill, performance standards, and self-confidence. Vocal exercises and solo singing. Advanced memorization is stressed.

9806 12:30p.m.-2:50p.m. Th ONLINE Jackson L R

MUSIC E06, Gospel Community Chorus

This course introduces older adults to gospel music, literature, and singing techniques with the goal of performing throughout the community. The course provides a venue for older adult students to express themselves through gospel music, gain knowledge of the history of gospel music, build or rebuild their self-confidence as soloists or group performers, and interact with a group of creative peers.

9807 1:00p.m.-2:50p.m. W ONLINE Bryant W

MUSIC E10, Spanish Folk Singing

This course provides older adults (primarily those with a working knowledge of the Spanish language) with an opportunity to practice and perform music in Spanish from around the world. Older adult students are introduced to Spanish music, literature, and singing techniques from their own and other cultures, and encouraged to express themselves through Spanish folk songs.



9808 12:00p.m.-1:50p.m. T ONLINE Perez J Z

MUSIC E30, Opera Appreciation

This course helps older adults understand and appreciate opera as a music form and provides opportunities for socialization through shared interests. Older adults learn about the creative aspects, history, and development of opera. The course includes operatic experiences, live productions, and other opportunities for mental stimulation and peer group socialization.

9809 11:00a.m.-12:50p.m. T ONLINE Jackson L R

MUSIC E32, Music Appreciation

This course helps older adults understand how music can enhance their life experiences by learning more about music styles, composition, performance, and historical periods. Older adults listen to and discuss musical selections and composers' biographies; expand their musical knowledge and understanding of different types of music, including orchestral, jazz, indigenous, and film music; and explore different aspects of musical performance by comparing different performers' recordings of the same piece.

9810 12:00p.m.-1:50p.m. F ONLINE Peterson J D

9811 1:00p.m.-2:50p.m. M ONLINE Hetz M L

MUSIC E34, Lyric Chorus

This course provides older adults with a musical growth experience, opportunities to enhance their self-esteem and sense of belonging, and a way to express their creativity and interact with peers. Older adults rehearse and perform three-part arrangements of classics, Broadway hits, and ragtime music, and learn to be positive contributors to the sound, appearance, and artistic personality of a performing chorus while keeping their concentration and lung capacity at a peak.

9812 9:00a.m.-11:50a.m. Th ONLINE Jackson L R

MUSIC E51, Piano and Theory

This course is intended to enhance the enjoyment of creating music among older adults and enhance their ability to express themselves through music. Older adults learn to play piano music at their own level and pace, and participate in group discussions with peers. Older adults also learn musical skills and concepts and develop their ability to play piano music.

9813 11:00a.m.-12:50p.m. S ONLINE Hetz M L

This section is for Intermediate and Advanced students.

9814 12:00p.m.-1:50p.m. F ONLINE Hetz M L

This section is for the Beginner student.



POLITICAL SCIENCE

POL SC E00, Current Events

This course increases older adults' understanding of local, national, and international current affairs and how it affects their lives as well as the world around them. Older adults consider the political, economic, and social movements that determine domestic and foreign policies in the United States and around the world.

9829	9:00a.m.-10:35a.m. W	ONLINE	Millan B A
9830	10:00a.m.-11:50a.m. M	ONLINE	Reiner M
9831	2:00p.m.-3:50p.m. F	ONLINE	Trives N
	2:00p.m.-3:50p.m. F	ONLINE	Johnson J P
9838	3:00p.m.-4:50p.m. M	ONLINE	Sarkissian R

THEATER ARTS

HUMDEV E15, Theater – History of Comedy

This seminar provides a supportive environment for older adults to discuss with their peers a variety of topics of interest to seniors, including the study of aging, public policy related to older adults, philosophy, literature, music and musicals, or religion. The course is designed to allow older adults to relate any of these topics to their life experiences and socialize with others in similar stages of life. Specific topics may vary from semester to semester and may include the history of comedy, the great American songbook, etc.

9793	9:00a.m.-10:50a.m. W	ONLINE	Achorn J C
------	----------------------	--------	------------

TH ART E01, Principles of Acting

This course allows older adults to explore the human condition in historical and contemporary dramatic literature, fairy tales, myths, and legends, satire, and parody. By learning how to analyze and interpret these texts, older adults will be able to craft the characters that inhabit these stories. Through the transformative process of creativity, older adults improve their acting skills and participate in a public performance, which builds self-confidence and self esteem.

9833	11:00a.m.-1:50p.m. T	ONLINE	Gannen B
9834	2:00p.m.-4:50p.m. T	ONLINE	Gannen B

TH ART E02, Theater Arts Appreciation

This course expands older adults' knowledge of play production methods and the history of the theater as it relates to current society and the life experiences of older adults. Older adults will learn about theater production from the viewpoint of the director, actor, critic, and viewer.

9835	9:00a.m.-10:50a.m. F	ONLINE	Abatemarco A M
------	----------------------	--------	----------------

TH ART E05, Reader's Theater

This course increases older adults' knowledge of how to present dramatic literature and allows them to express themselves by reading scenes, poetry, illuminating literature, or speeches in front of an audience. Older adults also interpret plays and practice acting skills with their peers. This course expands older adults' experience with dramatic literature without requiring perfect recall from memory.

9836	11:00a.m.-12:50p.m. F	ONLINE	Abatemarco A M
------	-----------------------	--------	----------------

TH ART E30, Dramatic Interpretation Through Movies

This course helps older adults explore the art, technology, language and appreciation of film from the point of view of the older adult. Older adult students analyze the fundamentals of film production as a means of encouraging mental stimulation and peer socialization. Film examples are shown in class for comparison and discussion.

9837	1:30p.m.-3:45p.m. W	ONLINE	Laffey S A
------	---------------------	--------	------------

PATHFINDERS PROGRAM

SMC Emeritus Pathfinders classes are geared towards the needs of individuals who are recovering from an acquired brain injury or stroke. Pathfinders exercise classes include the following:

- **HEALTH E63 Body Conditioning After a Stroke** help to improve balance, mobility, and physical endurance in a group setting.
- **HUMDEV E27 Exercising the Brain** is designed for individuals dealing with cognitive deficits.
- **HUMDEV E50 Communication After a Stroke** assist in the improvement of communication skills.

Interested SMC Emeritus students who would like to enroll in the aforementioned classes are required to call the SMC Center for Students with Disabilities ABI Program at 310-434-4442 for registration details. **You cannot enroll in the Pathfinders classes without first calling 310-434-4442. Registration is completed through the SMC Center for Students with Disabilities.**

HEALTH E63, Body Conditioning After a Stroke

This course helps older adults who have experienced an acquired brain injury to maintain or improve their mobility and physical endurance through an individualized program offered in a group setting. Topics include how to cope with the effects of brain injury or stroke and how to restore the student's natural energy and flexibility, through techniques used to regain and maintain physical fitness. Participation in this Pathfinders Program allows older adults to be included in their community and maintain their independence, and helps them to self-advocate and engage in activities that benefit their health.

9785	10:30a.m.-11:45a.m. T	ONLINE	Deuel E M
	12:00p.m.-1:15p.m. T	ONLINE	Deuel E M
	1:30p.m.-2:45p.m. T	ONLINE	Deuel E M
9786	10:30a.m.-11:45a.m. Th	ONLINE	Jaffe A O
	12:00p.m.-1:15p.m. Th	ONLINE	Jaffe A O
	1:30p.m.-2:45p.m. Th	ONLINE	Jaffe A O
9787	10:30a.m.-11:45a.m. F	ONLINE	Evans Jami R
	12:00p.m.-1:15p.m. F	ONLINE	Evans Jami R
	10:30a.m.-11:45a.m. W	ONLINE	Evans Jami R

HUMDEV E27, Exercising the Brain

This course assists older adults in minimizing anxiety when memory behavior patterns change. The ultimate goal of the class is to stimulate thinking and to exercise the brain. Older adults learn the latest information on the causes, symptoms, and treatments of memory loss in older adults, as well as practice skills to enhance memory retention and retrieval.

9799	11:00a.m.-12:15p.m. F	ONLINE	Nicholls J
	9:30a.m.-10:45a.m. F	ONLINE	Nicholls J

HUMDEV E50, Communication After a Stroke

This course, which is part of the Pathfinders Program, increases, enhances, and maintains the daily speech function of adults who have experienced speech impairments due to acquired brain injury. Older adults learn to cope with the effects of stroke or other brain injury on communication skills, get support from those in similar situations, and guidance from professionals after outpatient therapy is completed.

9802	10:30a.m.-11:45a.m. W	ONLINE	Feinberg L H
	12:00p.m.-1:15p.m. W	ONLINE	Feinberg L H



CLASSES BY THE DAY Spring 2021

All spring 2021 Emeritus classes will be conducted remotely via **Distance Education (ONLINE)**. Most will be synchronous and happen at the time scheduled, through Zoom or another platform. Some will be asynchronous, where you can complete the course on your own schedule. The instructor for each class will send the students on their rosters more information prior to the first class meeting. **Please activate your SMC Gmail account in order to receive your instructor's Distance Education online class access information.**

MONDAY

9:00a.m.-11:50a.m.	9710 ART E16, Life Drawing Studio	ONLINE
9:00a.m.-11:15a.m.	9720 ART E21, Painting/Drawing, Oil and Acrylic	ONLINE
9:00a.m.-10:50a.m.	9740 ENGL E23, Shakespeare	ONLINE
9:00a.m.-11:15a.m.	9746 ENGL E30, Creative Writing	ONLINE
9:00a.m.-10:50a.m.	9778 HEALTH E34, Stress Reduction through Yoga	ONLINE
9:00a.m.-10:50a.m.	9822 OCC E20, Using the Internet Safely	ONLINE
10:00a.m.-12:15p.m.	9716 ART E20, Drawing and Painting	ONLINE
10:00a.m.-11:50a.m.	9830 POL SC E00, Current Events	ONLINE
11:00a.m.-12:50p.m.	9741 ENGL E23, Shakespeare	ONLINE
11:00a.m.-12:50p.m.	9818 OCC E01, Word Processing	ONLINE
11:00a.m.-12:50p.m.	9832 PSYCH E33, Living as a Single Person	ONLINE
11:30a.m.-1:20p.m.	9745 ENGL E29, Greek Literature	ONLINE
11:30a.m.-1:20p.m.	9753 ENGL E37, Writing Seminar	ONLINE
11:30a.m.-1:50p.m.	9790 HME EC E52, Restaurant Critic – Dining Wisely: Healthy Eating Choices	ONLINE
12:00p.m.-2:50p.m.	9789 HME EC E01, Sewing Lab	ONLINE
12:30p.m.-3:30p.m.	9719 ART E20, Drawing and Painting	ONLINE
1:00p.m.-3:15p.m.	9721 ART E21, Painting/Drawing, Oil and Acrylic	ONLINE
1:00p.m.-3:50p.m.	9752 ENGL E34, Writing for Publication	ONLINE
1:00p.m.-2:50p.m.	9811 MUSIC E32, Music Appreciation	ONLINE
1:00p.m.-2:50p.m.	9828 PHOTO E10, Digital Photography II	ONLINE
1:30p.m.-3:20p.m.	9796 HUMDEV E24, Bereavement Support	ONLINE
2:00p.m.-3:50p.m.	9737 ENGL E20, Literature: The Novel	ONLINE
3:00p.m.-4:50p.m.	9824 OCC E20, Using the Internet Safely	ONLINE
3:00p.m.-4:50p.m.	9838 POL SC E00, Current Events	ONLINE

MONDAY AND WEDNESDAY

9:00a.m.-10:15a.m.	9766 HEALTH E24, Physical Fitness Principles & Practices	ONLINE
9:30a.m.-11:00a.m.	9804 MUSIC E02, Guitar	ONLINE
10:30a.m.-11:45a.m.	9773 HEALTH E25, Strength & Stamina Training Principles & Practices	ONLINE
10:30a.m.-11:45a.m.	9774 HEALTH E25, Strength & Stamina Training Principles & Practices	ONLINE
11:00a.m.-12:50p.m.	9757 HEALTH E21, Yoga Health & Safety, Principles & Practices	ONLINE
11:00a.m.-12:15p.m.	9780 HEALTH E38, Joint Health & Mobility	ONLINE
1:00p.m.-2:15p.m.	9763 HEALTH E23, T'ai Chi Principles & Practices	ONLINE
2:30p.m.-3:45p.m.	9784 HEALTH E38, Joint Health & Mobility	ONLINE

MONDAY AND FRIDAY

9:00a.m.-10:15a.m.	9760 HEALTH E23, T'ai Chi Principles & Practices	ONLINE
2:00p.m.-3:15p.m.	9764 HEALTH E23, T'ai Chi Principles & Practices	ONLINE

TUESDAY

9:00a.m.-11:50a.m.	9711 ART E16, Life Drawing Studio	ONLINE
9:00a.m.-11:15a.m.	9722 ART E22, Watercolor	ONLINE
9:00a.m.-10:50a.m.	9743 ENGL E25, Literature: The American Novel	ONLINE
9:00a.m.-10:50a.m.	9825 PHOTO E00, Digital Photography I	ONLINE
9:00a.m.-10:50a.m.	9826 PHOTO E10, Digital Photography II	ONLINE
9:30a.m.-11:45a.m.	9747 ENGL E30, Creative Writing	ONLINE
10:00a.m.-11:50a.m.	9702 ART E00, Survey of Art	ONLINE
10:00a.m.-11:50a.m.	9738 ENGL E22, Short Story	ONLINE
10:00a.m.-11:50a.m.	9798 HUMDEV E27, Exercising the Brain	ONLINE
10:00a.m.-12:50p.m.	9805 MUSIC E03, "The Merits" – Vocal Ensemble	ONLINE

10:30a.m.-11:45a.m.	9785 HEALTH E63, Body Conditioning After a Stroke	ONLINE
11:00a.m.-12:50p.m.	9809 MUSIC E30, Opera Appreciation	ONLINE
11:00a.m.-1:50p.m.	9833 TH ART E01, Principles of Acting	ONLINE
11:30a.m.-1:45p.m.	9723 ART E22, Watercolor	ONLINE
12:00p.m.-1:15p.m.	9785 HEALTH E63, Body Conditioning After a Stroke	ONLINE
12:00p.m.-1:50p.m.	9808 MUSIC E10, Spanish Folk Singing	ONLINE
12:30p.m.-2:20p.m.	9797 HUMDEV E25, Dealing with Hearing Impairment	ONLINE
1:00p.m.-3:50p.m.	9701 ART E00, Survey of Art	ONLINE
1:00p.m.-3:50p.m.	9715 ART E19, Painting	ONLINE
1:00p.m.-2:50p.m.	9821 OCC E10, Using Data Files	ONLINE
1:30p.m.-2:45p.m.	9785 HEALTH E63, Body Conditioning After a Stroke	ONLINE
2:00p.m.-3:50p.m.	9733 BILING E02, French Literature	ONLINE
2:00p.m.-4:50p.m.	9834 TH ART E01, Principles of Acting	ONLINE
6:30p.m.-9:20p.m.	9803 MUSIC E00, Concert Band	ONLINE

TUESDAY AND THURSDAY

8:30a.m.-9:45a.m.	9759 HEALTH E22, Chi Gong Principles & Practices	ONLINE
8:30a.m.-9:45a.m.	9765 HEALTH E24, Physical Fitness Principles & Practices	ONLINE
8:30a.m.-9:45a.m.	9771 HEALTH E25, Strength & Stamina Training Principles & Practices	ONLINE
9:00a.m.-10:15a.m.	9767 HEALTH E24, Physical Fitness Principles & Practices	ONLINE
9:30a.m.-10:45a.m.	9768 HEALTH E24, Physical Fitness Principles & Practices	ONLINE
10:00a.m.-11:50a.m.	9755 HEALTH E21, Yoga Health & Safety, Principles & Practices	ONLINE
10:00a.m.-11:15a.m.	9772 HEALTH E25, Strength & Stamina Training Principles & Practices	ONLINE
10:30a.m.-12:20p.m.	9756 HEALTH E21, Yoga Health & Safety, Principles & Practices	ONLINE
10:30a.m.-11:45a.m.	9781 HEALTH E38, Joint Health & Mobility	ONLINE
10:30a.m.-11:45a.m.	9782 HEALTH E38, Joint Health & Mobility	ONLINE
11:00a.m.-12:15p.m.	9769 HEALTH E24, Physical Fitness Principles & Practices	ONLINE
12:00p.m.-1:15p.m.	9775 HEALTH E25, Strength & Stamina Training Principles & Practices	ONLINE
12:30p.m.-1:45p.m.	9762 HEALTH E23, T'ai Chi Principles & Practices	ONLINE
12:30p.m.-1:45p.m.	9783 HEALTH E38, Joint Health & Mobility	ONLINE
1:30p.m.-2:45p.m.	9792 HUMDEV E06, Enjoy Life - Understanding Our Mind, Body & Brain for Senior Adults	ONLINE
2:00p.m.-3:50p.m.	9758 HEALTH E21, Yoga Health & Safety, Principles & Practices	ONLINE

WEDNESDAY

9:00a.m.-11:50a.m.	9712 ART E19, Painting	ONLINE
9:00a.m.-10:50a.m.	9793 HUMDEV E15, Theater - History of Comedy	ONLINE
9:00a.m.-10:50a.m.	9823 OCC E20, Using the Internet Safely	ONLINE
9:00a.m.-10:35a.m.	9829 POL SC E00, Current Events	ONLINE
10:00a.m.-12:15p.m.	9717 ART E20, Drawing and Painting	ONLINE
10:00a.m.-11:50a.m.	9744 ENGL E27, Poetry and Fiction	ONLINE
10:30a.m.-11:45a.m.	9787 HEALTH E63, Body Conditioning After a Stroke	ONLINE
10:30a.m.-11:45a.m.	9802 HUMDEV E50, Communication After a Stroke	ONLINE
11:00a.m.-12:50p.m.	9739 ENGL E22, Short Story	ONLINE
11:00a.m.-12:50p.m.	9820 OCC E10, Using Data Files	ONLINE
11:30a.m.-1:20p.m.	9795 HUMDEV E22, Senior Seminar: Through a Jewish Lens – Art, Culture & Entertainment	ONLINE
12:00p.m.-1:50p.m.	9776 HEALTH E30, Personal Safety - Fall Prevention	ONLINE
12:00p.m.-1:15p.m.	9802 HUMDEV E50, Communication After a Stroke	ONLINE
12:30p.m.-2:45p.m.	9718 ART E20, Drawing and Painting	ONLINE
12:30p.m.-3:20p.m.	9727 ART E30, Watercolor Studio	ONLINE
12:30p.m.-2:20p.m.	9800 HUMDEV E27, Exercising the Brain	ONLINE
1:00p.m.-2:50p.m.	9807 MUSIC E06, Gospel Community Chorus	ONLINE
1:30p.m.-3:20p.m.	9703 ART E00, Survey of Art	ONLINE
1:30p.m.-3:20p.m.	9735 BILING E03, Literature from Around the World	ONLINE
1:30p.m.-4:20p.m.	9791 HME EC E71, Needlecrafts II	ONLINE
1:30p.m.-3:45p.m.	9837 TH ART E30, Dramatic Interpretation Through Movies	ONLINE
2:00p.m.-3:50p.m.	9770 HEALTH E24, Physical Fitness Principles & Practices	ONLINE



WEDNESDAY AND FRIDAY

8:30a.m.-10:20a.m.	9754 HEALTH E21, Yoga Health & Safety, Principles & Practices	ONLINE
12:00p.m.-1:15p.m.	9761 HEALTH E23, T'ai Chi Principles & Practices	ONLINE

THURSDAY

9:00a.m.-11:50a.m.	9714 ART E19, Painting	ONLINE
9:00a.m.-11:50a.m.	9725 ART E30, Watercolor Studio	ONLINE
9:00a.m.-11:15a.m.	9748 ENGL E33, Autobiography	ONLINE
9:00a.m.-11:50a.m.	9812 MUSIC E34, Lyric Chorus	ONLINE
10:30a.m.-11:45a.m.	9786 HEALTH E63, Body Conditioning After a Stroke	ONLINE
11:00a.m.-12:50p.m.	9815 OCC E00, Basic Computer Training (formerly Introduction to Computers)	ONLINE
11:30a.m.-1:45p.m.	9730 ART E80, Jewelry Making	ONLINE
12:00p.m.-2:15p.m.	9729 ART E55, Sculpture	ONLINE
12:00p.m.-1:15p.m.	9786 HEALTH E63, Body Conditioning After a Stroke	ONLINE
12:30p.m.-2:50p.m.	9806 MUSIC E04, Voice Training	ONLINE
1:00p.m.-3:50p.m.	9728 ART E30, Watercolor Studio	ONLINE
1:00p.m.-3:15p.m.	9736 CT E00, The Fix-It Class – Repair Almost Anything	ONLINE
1:30p.m.-3:20p.m.	9704 ART E00, Survey of Art	ONLINE
1:30p.m.-2:45p.m.	9786 HEALTH E63, Body Conditioning After a Stroke	ONLINE
2:00p.m.-4:15p.m.	9731 ART E80, Jewelry Making	ONLINE
2:00p.m.-3:50p.m.	9742 ENGL E24, Bible as Literature	ONLINE
3:00p.m.-4:50p.m.	9794 HUMDEV E17, Senior Seminar – Luisa R.G. Kot Concert Series	ONLINE

FRIDAY

9:00a.m.-11:50a.m.	9726 ART E30, Watercolor Studio	ONLINE
9:00a.m.-10:50a.m.	9732 BILING E01, Literature in Spanish	ONLINE
9:00a.m.-10:50a.m.	9835 TH ART E02, Theater Arts Appreciation	ONLINE
9:30a.m.-11:45a.m.	9708 ART E15, Drawing	ONLINE
9:30a.m.-12:20p.m.	9724 ART E24, Calligraphy II	ONLINE
9:30a.m.-10:45a.m.	9799 HUMDEV E27, Exercising the Brain	ONLINE
10:00a.m.-12:50p.m.	9713 ART E19, Painting	ONLINE
10:30a.m.-11:45a.m.	9787 HEALTH E63, Body Conditioning After a Stroke	ONLINE
11:00a.m.-12:50p.m.	9779 HEALTH E34, Stress Reduction through Yoga	ONLINE
11:00a.m.-12:15p.m.	9799 HUMDEV E27, Exercising the Brain	ONLINE
11:00a.m.-12:50p.m.	9817 OCC E00, Basic Computer Training (formerly Introduction to Computers)	ONLINE
11:00a.m.-12:50p.m.	9836 TH ART E05, Reader's Theater	ONLINE
12:00p.m.-1:15p.m.	9787 HEALTH E63, Body Conditioning After a Stroke	ONLINE
12:00p.m.-1:50p.m.	9810 MUSIC E32, Music Appreciation	ONLINE
12:00p.m.-1:50p.m.	9814 MUSIC E51, Piano and Theory	ONLINE
12:30p.m.-2:45p.m.	9709 ART E15, Drawing	ONLINE
12:30p.m.-2:45p.m.	9751 ENGL E33, Autobiography	ONLINE
1:30p.m.-3:20p.m.	9705 ART E00, Survey of Art	ONLINE
2:00p.m.-3:50p.m.	9831 POL SC E00, Current Events	ONLINE
2:00p.m.-3:50p.m.	9831 POL SC E00, Current Events	ONLINE

SATURDAY

8:00a.m.-9:50a.m.	9777 HEALTH E34, Stress Reduction through Yoga	ONLINE
9:30a.m.-11:45a.m.	9749 ENGL E33, Autobiography	ONLINE
11:00a.m.-12:50p.m.	9813 MUSIC E51, Piano and Theory	ONLINE
12:00p.m.-2:15p.m.	9750 ENGL E33, Autobiography	ONLINE

Want More Classes?

Check Out What's New at
SMC Community Education*



Languages, Featured Lectures, Photography, Dance & Exercise, and Much Much More!

Expand Your Lifelong Learning Goals.
Connect with New Classes, and
Discover an Exciting New World of Learning!

**SMC Community Education are not-for-credit, fee-based classes for your personal enrichment.*

Register for classes at commed.smc.edu

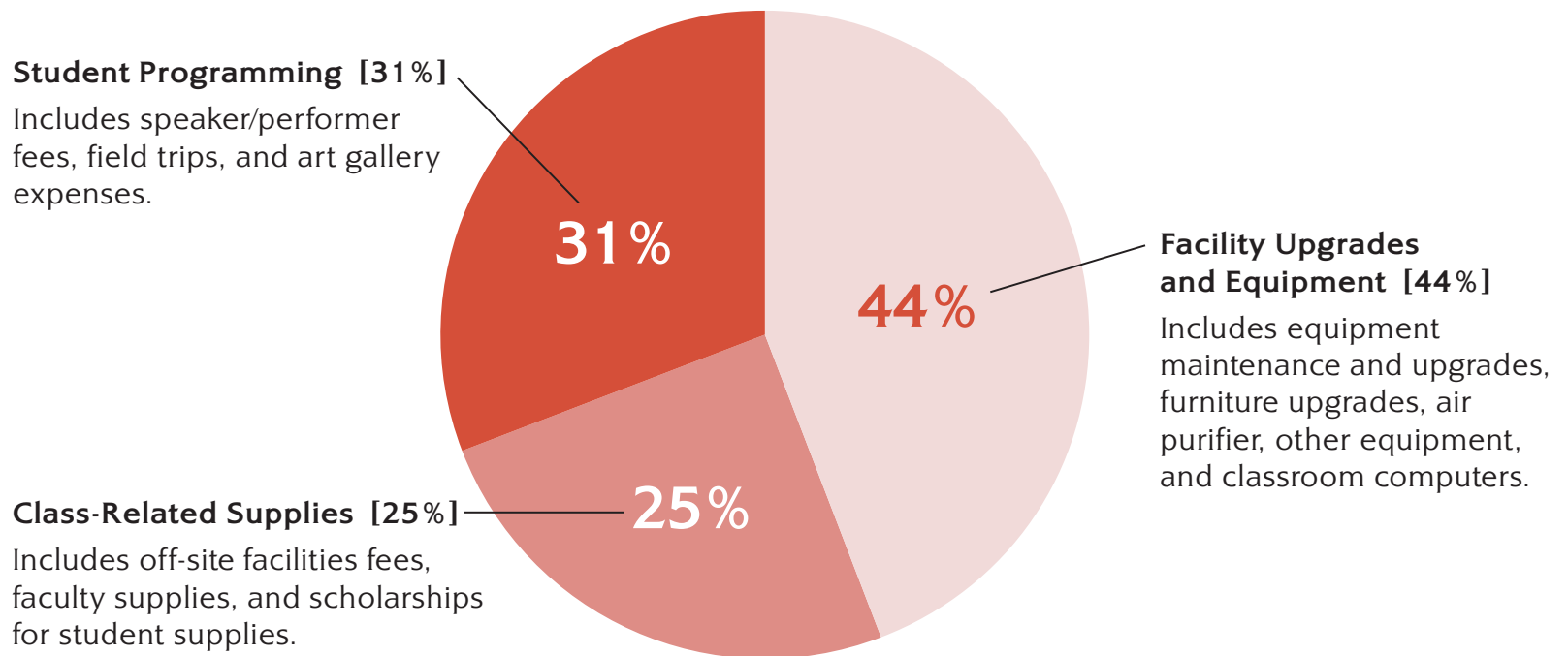
SANTA MONICA COLLEGE
COMMUNITY
EDUCATION



SUPPORT LIFELONG LEARNING

BY JOINING OUR COMMUNITY OF SUPPORTERS

SMC Emeritus Donations at Work [January - December 2019]



WAYS TO GIVE:

1. Join the Emeritus 250 CLUB by donating \$250 or more annually, which includes an invitation to our annual appreciation event.
2. Make a direct distribution from your IRA.
3. Make a bequest to Santa Monica College Foundation to create an enduring legacy.

Donate securely at:

SantaMonicaCollegeFoundation.org/Emeritus



SANTA MONICA COLLEGE
FOUNDATION



SMC Emeritus Program student Hope Copeland (1926-2018)

Questions? Contact Cheryl Ward at the SMC Foundation 310-434-4215 or ward_cheryl@smc.edu

This community ad is being shared by Emeritus as a free program you may be interested in.

CAREGIVER EDUCATION

Offered by Alzheimer's Los Angeles



Gain skills and knowledge to improve caregiving and reduce stress.

CLASSES OFFERED:

Savvy Caregiver

2-hour class held for 6 weeks, 10 a.m. to 12 p.m.
Beginning March 1, April 2, or May 6

Savvy Caregiver Express

2-hour class held for 3 weeks, from 10 a.m. to 12 p.m.
Beginning March 16, April 15, or May 12

Behaviors & Alzheimer's – Using IDEA!

1-hour class held once a month
2nd Wednesday of the month at 10 a.m. to 11 a.m.
March 10 – June 9

Lost Memories: Short film & Discussion

1-hour class held once a month
3rd Wednesday of the month at 10 a.m. to 11 a.m.
March 17 – May 19

Workshops are held via webinar. Registration closes 4 days prior to the class. To RSVP or for more information, contact Sara Mikael 323-451-2699 or smikael@alzla.org

For more classes and resources call our Helpline at **844.HELP.ALZ (844.435.7259)**
Email us at help@alzla.org or visit our website at www.alzheimersla.org



SUPPORT LIFELONG LEARNING!

Donate your car, truck boat or ANY other type of vehicle to SMC Foundation.

Your gift may even qualify for a **Tax Deduction**



WE MAKE DONATING YOUR VEHICLE EASY!



Call us or visit us online.



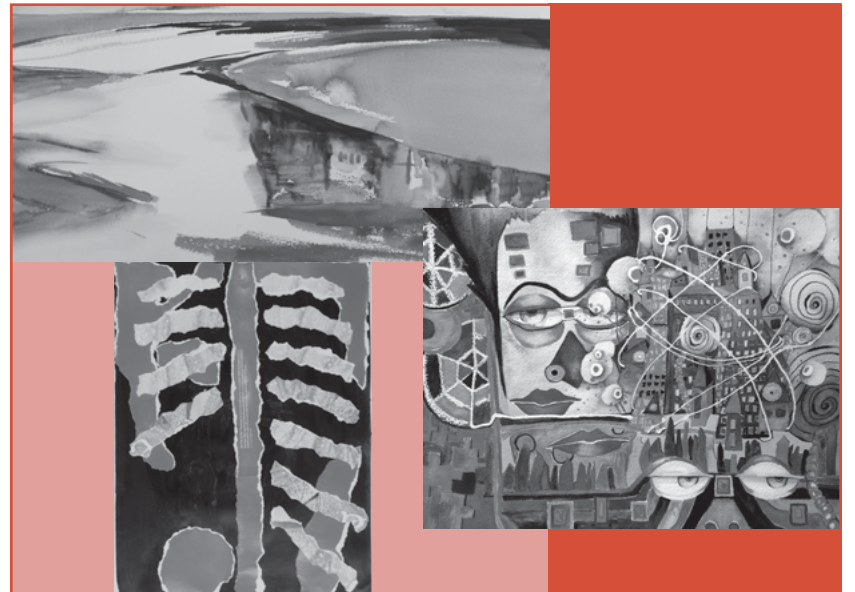
Schedule your free convenient pick-up.



Receive a tax receipt for your donation



Schedule your donation by calling (858) 500-7433 or visit SantaMonicaCollegeFoundation.org/cardonation



Emeritus Gallery Virtual Art Exhibitions

For event information, visit smc.edu/emergitusgallery

NONCREDIT CERTIFICATE

INTRODUCTION TO WORKING WITH OLDER ADULTS

FREE COURSES

If you are an Emeritus student that has a caregiver, or know someone who does, please let them know that this program is for caregivers and friends and family of older adults.

This noncredit program prepares anyone looking for entry-level careers working with older adults and existing caregivers with skill-enhancement. Completion of this program may qualify you for entry in high-demand occupations such as Caregivers, Companions, Social and Human Service Assistants, Direct Support Professionals, and Resident Care Providers. Complete all three courses to earn the certificate.

For more information please visit smc.edu/noncredit or call **310-434-3453**



SCHOLARSHIPS/GRANTS

Scholarships/Grants are available for material or book needs for students experiencing financial difficulties. Make a confidential request to the Program Coordinator, 310-434-4306.

ADA ACCOMMODATIONS

SMC Emeritus students who require ADA (The Americans with Disabilities Act) accommodations in order to successfully participate in our unique noncredit older adult program or to sign up for our specialized Pathfinders classes should contact the SMC Center For Students With Disabilities. Santa Monica College makes every effort to make its campus fully accessible to students with disabilities. The college's Center for Students with Disabilities offers guidance and counseling on admissions requirements and procedures, as well as a number of special programs to help students with their academic, vocational, and career planning goals. In addition, the Center offers services such as specialized equipment, adaptive computer training, and test proctoring, among many other accommodations for students who are eligible.

Call the SMC Center for Students with Disabilities for SMC Emeritus student ADA accommodations at **310-434-4265** or visit smc.edu/disabledstudent

STATEMENT OF NONDISCRIMINATION

Santa Monica College fosters a work and learning environment that welcomes and supports a diverse student body and staff reflective of our pluralistic society. We are committed to equal opportunity regardless of race, color, religion, gender, national origin, age, disability, status as a Vietnam-era veteran, sexual orientation, or marital status for admission and enrollment in classes, student services, financial aid, and employment in accordance with provisions of Title VI and VII of the 1964 Civil

Rights Act, Title IX of the Educational Amendments of 1972, and Section 504 of the Rehabilitation Act of 1973 (P.L. 93-112).

Any person seeking information about or claiming grievance because of alleged violations of the laws listed above should contact:

- SMC Human Resources Office for complaints of unlawful discrimination, sexual harassment and sexual discrimination, 310-434-4415
- ADA/504 Compliance Officer for disability discrimination concerns, 310-434-4442

Grievances are reviewed in terms of Title VI, Title VII, Title IX, and Section 504 law. If normal channels are not available or fail to meet legal requirements, the necessary action is initiated by the college. A record of all grievances is reported to the Affirmative Action Committee.

De acuerdo con los provisos de los Títulos VI y VII de la Ley de Derechos Civiles de 1964, el Título IX de las Enmiendas Docentes de 1972 y la Sección 504 de la Ley de Rehabilitación de 1973 (P.L. 93-112), Santa Mónica College se compromete a la igualdad de oportunidades para ingresar en el College, para matricularse en las clases, para utilizar los servicios estudiantiles, para ayuda financiera y para empleo, sin discriminar por razones de raza, color, religión, sexo, país de origen, edad, impedimento físico, preferencia sexual, estado civil o por ser veterano de la época de Vietnam.

THIS SCHEDULE IS PREPARED BY THE SANTA MONICA COLLEGE OFFICE OF MARKETING

Donald Girard, *Senior Director, Government Relations and Institutional Communications*

Ming-Yea Wei, *Marketing Design Analyst*

Jonathan Ng, *Senior Graphic Designer*

Vivian Chu, *Graphic Designer*

Paul Trautwein, *Web Coordinator*

Santa Monica College Contributors: Dr. Kathryn E. Jeffery, Dr. Scott Silverman, Vivian Rankin-Scales, Ashley Price, and Jessica Riojas.





A Program of Santa Monica College

APPLICATION FORM

Applications will only be accepted by email. Email to: emeritus@smc.edu

Full Legal Last Name: _____ Middle: _____
 Full Legal First Name: _____
 Legal Permanent Street Address: _____ Apt. No.: _____
 City: _____ State: _____ Zip Code: _____
 Mailing Address (if different from above). Include P.O. Box, City and Zip Code. _____

Area Code: _____ Telephone Number: _____ Birth Month: _____ Day: _____ Year: _____
 Check One: Male Female
 Email me information on SMC Emeritus, SMC Foundation, and SMC.

YOU MUST ANSWER THE FOLLOWING QUESTIONS EACH TIME YOU REGISTER.
 Term: Summer Fall Winter Spring Have you enrolled in SMC or Emeritus Classes before? YES NO
 Have you resided in California for at least two years? YES NO If NO, since _____
 If NO, last legal resident address: _____
 Have you been disqualified or dismissed from a college? YES NO
 If yes, enter college name: _____ and year _____

Section No.	Course Names	Time/Day	Section No.	Course Names	Time/Day

WRITE ONE CODE NUMBER IN EACH BOX AT THE RIGHT: (The State requires this information for new students.)

Ethnic Background	1. African American 2. American Indian/Alaskan Native 3. White 4. Mexican/Chicano 5. Central American 6. South American 7. Hispanic Other 8. Asian Indian 9. Cambodian 10. Chinese 11. Filipino 12. Japanese 13. Korean 14. Laotian 15. Vietnamese 16. Asian Other 17. Guamanian 18. Hawaiian 19. Samoan 20. Pacific Islander
Citizenship	1. United States 2. Permanent Resident 3. Temporary Resident 4. Refugee/Asylee 5. Student F1 or M1 Visa 6. Other (specify below): _____ 7. Unknown 8. Foreign student taking online classes from home country.
Enrollment Status	If you selected No. 2,3,4,5, or 6, write in your Permanent Resident or Visa No.: _____ 1. First time college student. 2. First time at SMC, attended another college. 3. Returning to SMC, last attended another college. 4. Returning to SMC, last attended SMC. 5. Continuing from a previous semester. 6. Special admit, currently enrolled in K-12.
Educational Level	Year last attended school: _____ CERTIFICATE, DEGREE OR GRADUATED FROM: 0. Non-high school graduate 1. Advanced high school 2. Adult Diploma 3. High school graduate – No college degree 4. Passed GED test 5. Received High School Proficiency Certificate 6. Foreign Secondary School Diploma 7. Earned College Associate Degree 8. Earned College Bachelor Degree or higher

MY DONATION OF \$ _____ TO SUPPORT EMERITUS IS ENCLOSED.
 Emergency Contact: _____
 Emergency Telephone No.: _____

REQUIRED
*** WITHOUT YOUR SIGNATURE AND DATE WE CANNOT PROCESS YOUR FORM**
 I certify that the statements made in this application are true and complete to the best of my knowledge. I understand that falsification, withholding pertinent data or failure to report changes in residence may result in my dismissal.
 Signature: _____
 Date: _____

YES! Count me in as a supporter!
 Check payable to: SMC FOUNDATION (write "Emeritus" in the memo line)
 \$1,000 and above President's Circle
 \$500 to \$999
 \$250 to \$499 Club 250 starts at \$250
 \$100 to \$249

Please send me information about how I can provide for SMC and/or SMC Emeritus in my will or estate plan, including tax benefits and the SMC Foundation's Legacy Society.

PLEASE PRINT:
 Name: _____
 Address: _____
 City/State/Zip: _____
 Phone Number: _____
 Email: _____
 This donation should be listed as Anonymous.

All Spring 2021 Classes Will Be Online!



1227 2nd Street, Santa Monica, CA 90401
Business Hours: Mon. – Fri., 8:30 a.m. – 4:30 p.m.
Telephone: 310-434-4306
Email: emeritus@smc.edu
Website: smc.edu/emeritus
SMC Emeritus Campus is temporarily closed.

SMC EMERITUS STAFF

Dr. Scott Silverman, Dean, Noncredit and External Programs (Interim)
Vivian Rankin-Scales, Program Coordinator
Ashley Price, Administrative Assistant
Jessica Riojas, Student Services Clerk

VOLUNTEERS

Mady Bergman, London Carter, Susan Cohen, Walter Coronel,
Pat Gorman, Fida Habib, Alice Hirsh, Jeffrey Hogue, Suzie Kim,
Cecelia Krippendorf, Shanta Lulla, Ruth Okin, Joseph “Wally” Pegrum,
Susan Shapiro, Lillia Singer

EMERITUS STUDENT ADVISORY COUNCIL

Student membership of the Associate Dean’s Emeritus Student
Advisory Council will be listed on the SMC Emeritus website at:
smc.edu/emeritus

SMC BOARD OF TRUSTEES

Dr. Nancy Greenstein, Chair; Dr. Susan Aminoff, Vice Chair;
Dr. Louise Jaffe; Dr. Margaret Quiñones-Perez; Rob Rader;
Dr. Sion Roy; Barry A. Snell; Joshua Elizondo, Student Trustee;
Kathryn E. Jeffery, Ph.D., Superintendent/President

SMC Emeritus Spring 2021 Schedule of Classes

WHAT IS SMC EMERITUS?

SMC Emeritus, started in 1975, is a noncredit older adult program of Santa Monica College. SMC Emeritus serves over 3,600 students annually and offers over 120 free classes of interest to senior citizens. All classes are held during the day at convenient locations throughout the community or at our home base on Second Street. The name Emeritus refers to people “retired with honor.” All older adults are welcome. For more information, call the SMC Emeritus office at 310-434-4306, visit our website at smc.edu/emeritus or stop by our office at 1227 Second Street, Santa Monica.

¿ QUÉ ES SMC EMERITUS ?

SMC Emeritus, inaugurado en 1975, es un programa sin créditos que ofrece Santa Monica College para adultos mayores. SMC Emeritus atiende a más de 3,600 estudiantes anualmente y ofrece más de 120 clases gratuitas de interés a personas de la tercera edad. Todas las clases se llevan a cabo durante el día en lugares accesibles en toda la comunidad o en nuestra sede en Second Street. El nombre Emeritus se refiere a personas “jubiladas con honor.” Todos los adultos mayores son bienvenidos. Para más información, llame a la oficina de SMC Emeritus al 310-434-4306, visite nuestro sitio web en smc.edu/emeritus o acuda a nuestra oficina ubicada en 1227 Second Street, Santa Monica. Ofrecemos clases en español. Mire dentro de este catálogo para mayor información.



THE EMERITUS GALLERY 2012-2020: CELEBRATION AND ARCHIVE Opens January 21, 2021

Front Cover:

Linda Immer, *Orange Cow*, oil on canvas, 2018
Dorli Burge, *Malibu Lagoon*, photograph, 2018
Catherine Tirr, *Looking Up*, acrylic on canvas
Janice Hanks, *We Have Fire Everywhere!*, acrylic on canvas, 2019
Jeanne Blessing, *Untitled*, mixed media sculpture
Chris Hero, *Ms. Toby*, oil on paper, 2014
Elsie Brown, *Lineal Delight*, acrylic, 2018
Jonathan Tillman, *5th Ave., NYC*, photograph, 2018
Tom Krumpak, *Japan/Modern Series #6*, acrylic on canvas, 2014
Katy Crowe, *Bagawat II*, oil on linen, 2014
Elle Martin, *Mountain Sunrise*, collage, 2017
Jacob Melchi, *Tilted I*, oil on linen, 2013
Bruce Trentham, *Point Dume in the Morning*, pastel, 2016
Young-He Keh, *Cosmos*, acrylic on canvas, 2019

Back Cover:

Ron Maurer, *The Gig*, acrylic on canvas, 2019